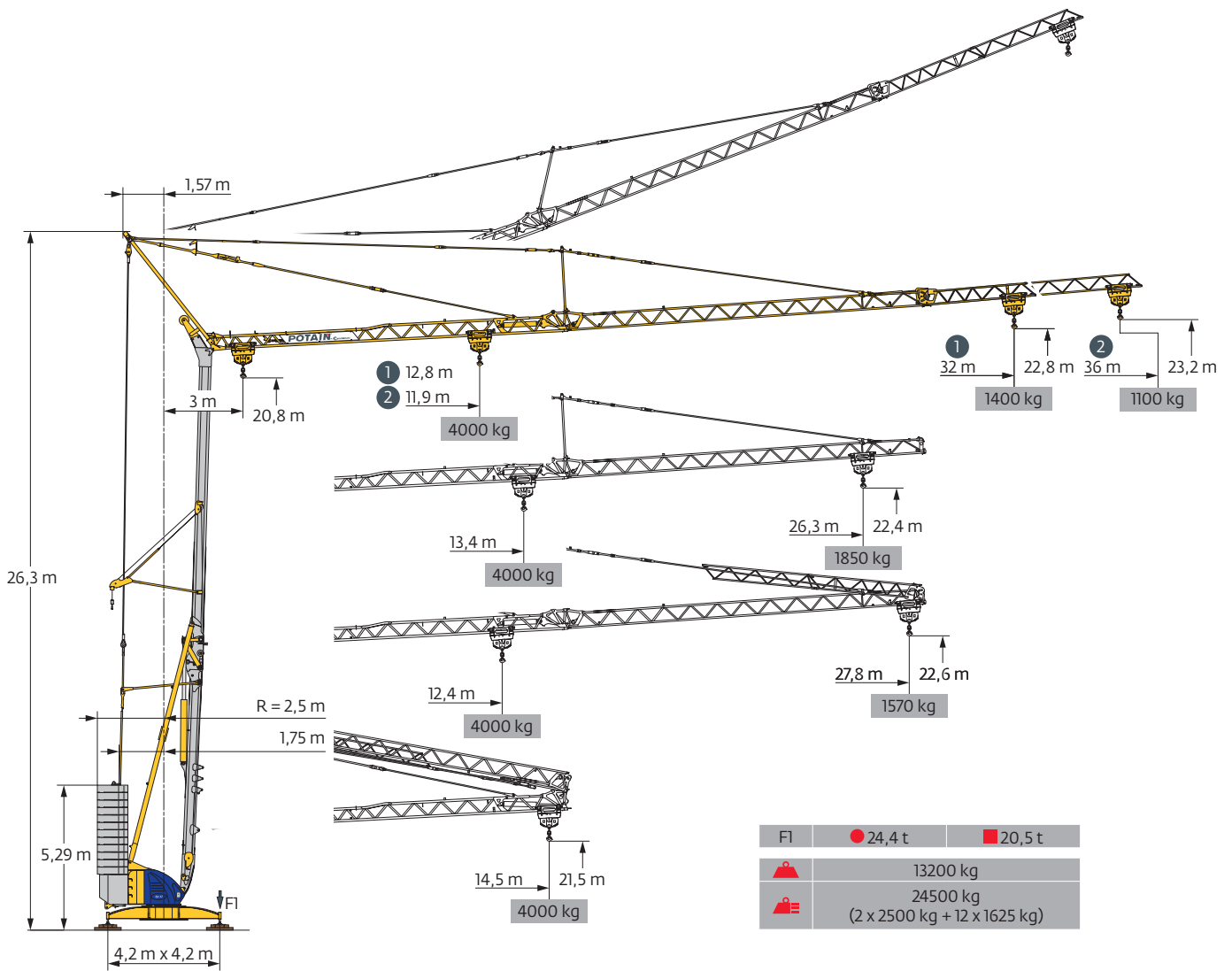
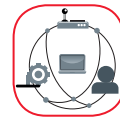


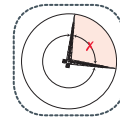
## Igo 42



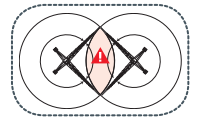
SmartCom



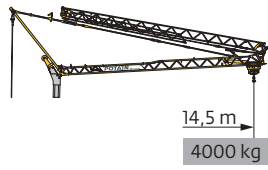
Top Zone



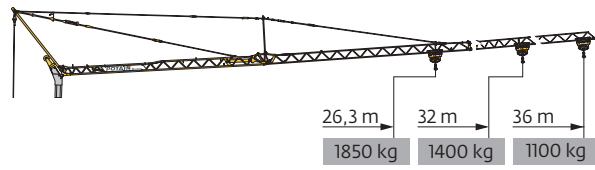
Top Tracing II



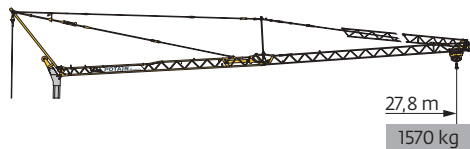
Courbes de charges / Lastkurven / Load curves / Curvas de cargas / Curve di carico  
 Curvas de carga / Кривые нагрузок



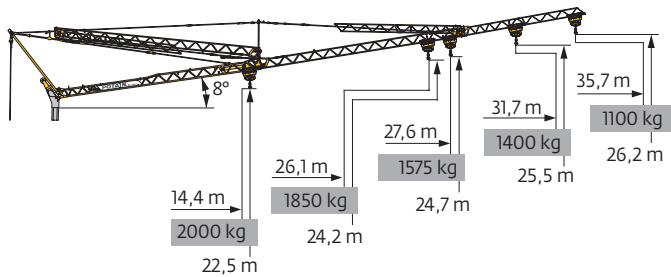
36 m	3	▶ 14,5 m	4000 kg
▲▲▲			2000 kg
▲▲▲			2000 kg
32 m	3	▶ 14,5 m	4000 kg
▲▲▲			2000 kg
▲▲▲			2000 kg
26,3	3	▶ 14,5 m	4000 kg
▲▲▲			2000 kg
▲▲▲			2000 kg



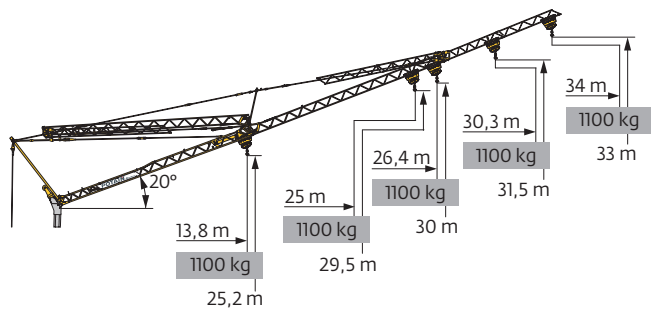
36 m	3	▶ 11,9 12 14 16 18 20 20,8 21,8 22 24 26 28 30 32 34 36 m	4000 3950 3255 2760 2385 2095 2000 1885 1860 1670 1515 1380 1265 1165 1080 1000 kg
▲▲▲			2000 1885 1860 1670 1515 1380 1265 1165 1080 1000 kg
▲▲▲			2000 1975 1780 1620 1485 1370 1265 1180 1100 kg
32 m	3	▶ 12,8 14 16 18 20 22 22,6 23,6 24 26 28 30 32 m	4000 3595 3050 2640 2320 2065 2000 1895 1855 1685 1535 1410 1300 kg
▲▲▲			2000 1895 1855 1685 1535 1410 1300 kg
▲▲▲			2000 1965 1790 1640 1510 1400 kg
26,3	3	▶ 13,4 14 16 18 20 22 23,6 24 24,6 26,3 m	4000 3780 3210 2780 2445 2180 2000 1930 1900 1750 kg
▲▲▲			2000 1930 1900 1750 kg
▲▲▲			2000 1850 kg



36 m	3	▶ 12,4 14 16 18 20 21,7 22 22,6 24 26 27,8 m	4000 3425 2900 2510 2210 1995 1965 1900 1765 1600 1470 kg
▲▲▲			2000 1965 1900 1765 1600 1470 kg
▲▲▲			2000 1865 1700 1570 kg



36 m	3	▶ 20,6 21,5 22 24 26 28 30 32 34 35,7 m	2000 1900 1850 1650 1500 1350 1250 1150 1050 1000 kg
▲▲▲			2000 1950 1750 1600 1450 1350 1250 1150 1100 kg
32 m	3	▶ 22,4 23,3 24 26 28 30 31,7 m	2000 1920 1850 1650 1500 1400 1300 kg
▲▲▲			2000 1950 1750 1600 1500 1400 kg
26,3 m	3	▶ 23,6 24,6 25 26,1 m	2000 1890 1850 1750 kg
▲▲▲			2000 1950 1850 kg
36 m	3	▶ 21,6 22 22,5 24 26 27,6 m	2000 1950 1900 1750 1600 1475 kg
▲▲▲			2000 1850 1700 1575 kg
36 m	3	▶ 14,4 m	2000 kg
32 m			2000 kg
▲▲▲			2000 kg



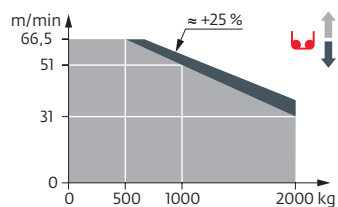
36 m	3	▶ 34 m	1000 kg
▲▲▲			1100 kg
32 m	3	▶ 30,3 m	1000 kg
▲▲▲			1100 kg
26,3 m	3	▶ 25 m	1000 kg
▲▲▲			1100 kg
36 m	3	▶ 26,4 m	1000 kg
32 m			1000 kg
▲▲▲			1100 kg
36 m	3	▶ 13,8 m	1000 kg
32 m			1000 kg
▲▲▲			1100 kg

Mécanismes / Triebwerke / Mechanisms / Mecanismos / Meccanismi  
 Mecanismos / Механизмы

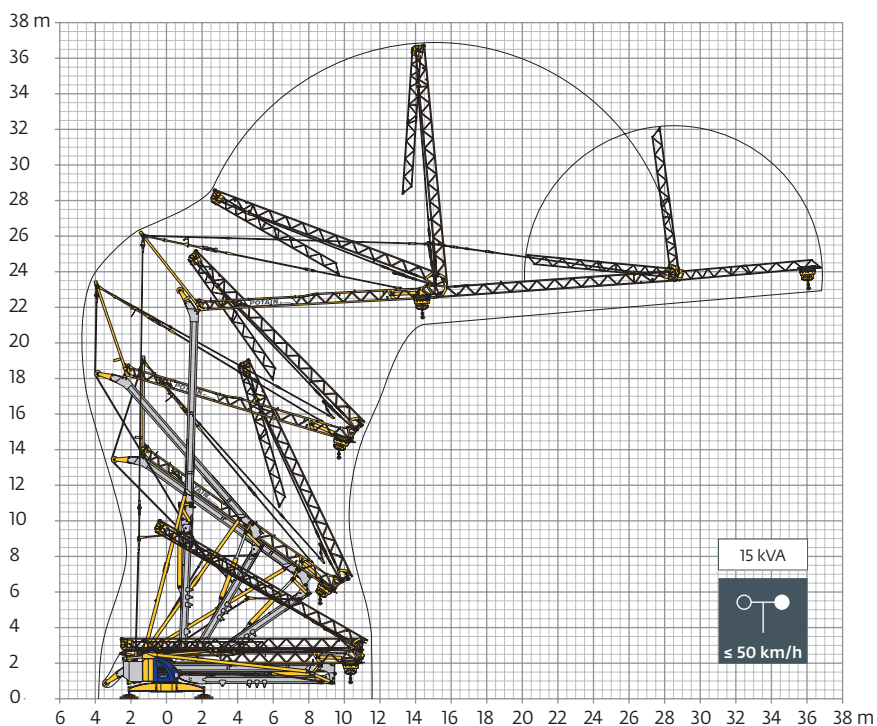
400 V - 50 Hz 480 V - 60 Hz													ch - PS hp	kW
	15 LVF 10 Optima	m/min	3,6	18	31	51	66,5	1,8	9	15,5	25,5	33	15	11
		kg	2000	2000	2000	1000	500	4000	4000	4000	2000	1000		
	3 DVF 5	m/min	15 - 30 - 45 (0 → 1000 kg) 15 - 30 - 41 (1000 → 4000 kg)									3	2,2	
	RVF 41 Optima+	tr/min U/min rpm	0 → 0,8									2	3	

IEC 60204-32	kVA
400 V (+10% -10%) 50 Hz / 480 V (+6% -10%) 60 Hz	15 kVA

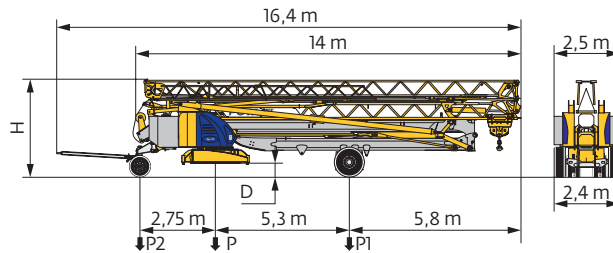
15 LVF 10 Optima



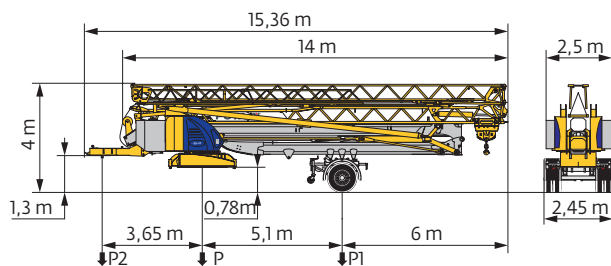
Montage / Montage / Erection / Montaje / Montaggio  
 Montagem / Монтаж



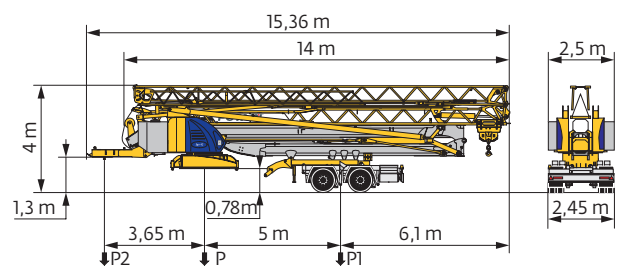
Transport / Transport / Transport / Transporte / Trasporto  
Transporte / Транспортировка



	km/h	D (m)	H (m)	P (kg)	P1 (kg)	P2 (kg)
DJ100/S120	10	0,36/0,21	3,52/3,37	20010	10605	9405
DJ105/S125	25	0,36/0,21	3,52/3,37	20300	10815	9485
..... /..... <b>i</b>						



	km/h	P (kg)	P1 (kg)	P2 (kg)
SL121/J135	25	21060	12790	8270
..... /..... <b>i</b>				



	km/h	P (kg)	P1 (kg)	P2 (kg)
SL122/J215M (EBS)	80	21980	14100	7880

**FR**

**DE**

**EN**

**ES**

**IT**

**PT**

**RU**

<b>R</b>	Rayon de giration	Schwenk radius	Rear slewing radius	Radio de giro	Raggio di rotazione	Raio de rotação	Задний габарит
<b>i</b>	Nous consulter	Auf Anfrage	Consult us	Consultarnos	Consultateci	Consultar-nos	Проконсультируйтесь у нас
<b>●</b>	Réactions en service	Reaktionskräfte in Betrieb	Reactions in service	Reacciones en servicio	Reazioni in servizio	Reacções em serviço	Реакция при работе
<b>■</b>	Réactions hors service	Reaktionskräfte außer Betrieb	Reactions out of service	Reacciones fuera de servicio	Reazioni fuori servizio	Reacções fora de serviço	Реакция в покое
<b>⚖</b>	Poids à vide, sans lest, sans trains de transport, avec flèche maxi. et hauteur standard.	Gewicht ohne Last, ohne Ballast, ohne Transportachsen mit max. Auslager und Standardhöhe	Weight without load, without ballast, without transport axes, with max. jib and standard height	Peso en vacío, sin lastre, sin trenes de transporte con flecha y altura estándar	Peso a vuoto, senza zavorra, senza assali di trasporto, con braccio max e altezza standard.	Peso em vazio, sem lastro, sem eixos de transporte com lança máxima e altura standard.	Вес без груза, без балласта, без осей для транспортировки, с максимальным вылетом стрелы и стандартной высотой
<b>⚖</b>	Poids total du lest	Ballast-Gesamtgewicht	Total ballast weight	Peso total del lastre	Peso totale della zavorra	Peso total do lastro	Общий вес балласта
<b>🧰</b>	Équipements standards	Standardausrüstungen	Standard equipment	Equipamiento de serie	Equipaggiamento standard	Equipamento de série	Стандартное оборудование
<b>🧰</b>	Équipements optionnels	Sonderausrüstungen	Options	Equipamiento opcional	Equipaggiamento in opzione	Equipamento opcional	Дополнительное оборудование (опция)
<b>⬆</b>	Levage	Heben	Hoisting	Elevación	Sollevarmento	Elevação	Подъем
<b>➡</b>	Distribution	Katzfahren	Trolleying	Distribución	Distribuzione	Distribuição	Перемещение по стреле
<b>🔄</b>	Orientation	Schwenken	Slewing	Orientación	Rotazione	Rotação	Поворот
<b>kVA</b>	Puissance requise	Erforderliche Leistung	Required power	Potencia Necesaria	Potenza richiesta	Potência Necessária	Потребляемая мощность

<b>⚠</b>	Document commercial non contractuel. Pour toute information technique se référer à la notice correspondante.	Unverbindliches Vertriebsdokument. Für technische Informationen, siehe die entsprechenden Anweisungen.	This commercial document is not legally binding. For any technical information, please refer to the corresponding instructions.	Documento comercial non contractual. Para cualquier información técnica, ver la noticia correspondiente.	Documento commerciale non vincolante, per tutte le informazioni tecniche fare riferimento al catalogo istruzioni.	Documento comercial não contratual. Para qualquer informação técnica complementar consultar as respectivas instruções.	Этот коммерческий документ не является юридически обязательным. Для получения технической информации, см. соответствующие инструкции.
----------	--	--	---	--	---	--	---



**Americas**  
Manitowoc, Wisconsin, USA  
Tel: +1 920 684 6621  
Fax: +1 920 683 6277

**Shady Grove, Pennsylvania, USA**  
Tel: +1 717 597 8121  
Fax: +1 717 597 4062

**Europe, Middle East, Africa**  
Dardilly, France  
Tel: +33 (0)4 72 18 20 20  
Fax: +33 (0)4 72 18 20 00

**China**  
Shanghai, China  
Tel: +86 21 6457 0066  
Fax: +86 21 6457 4955

**Greater Asia-Pacific**  
Singapore  
Tel: +65 6264 1188  
Fax: +65 6862 4040

www.manitowoccranes.com

©2016 All Rights Reserved – Manitowoc Cranes, LLC and its affiliates.